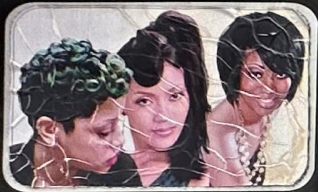


IPRG

**FOR
LEASE**

1397 FULTON AVENUE
BROOKLYN, NY 11216
BETWEEN MARCY AND TOMPKINS AVENUE



Michelle's
Hair Salon



1397

347.295.3374

**RET
FOR
LEA**

0-46



SIZE

1,000 SF

ASK

\$5,000/Month

FRONTAGE

14'

CEILING HEIGHTS

13'

TRANSPORTATION



POSSESSION

Immediate

HIGHLIGHTS

- Prime Fulton Street Retail with Great Foot, Driving Traffic
- Former H&R Block w/ Private Bathroom, Back Office / Food Allowed
- Close Proximity to Bus Lines / Subway Station with 5.8 Million Annual Riders
- Neighbors: Foodtown, Shake Shack, Mcdonalds, City MD, Walgreens, Footlocker, Pay O'Matic

