

IPRG

FOR LEASE

1623 UNION STREET
BROOKLYN, NY 11213
CORNER OF TROY AVENUE & UNION STREET

SPACE B

SPACE A



FOR LEASE

1623 UNION STREET, BROOKLYN, NY 11213

CORNER OF TROY AVENUE & UNION STREET

SIZE

A) 840 SF/Full Basement

B) 300 SF Inline Option

1,140 SF Total Combined

ASK

\$3,750/Month

\$2,000/Month

\$5,750/Month

FRONTAGE

30'

CEILING HEIGHTS

10'

TRANSPORTATION

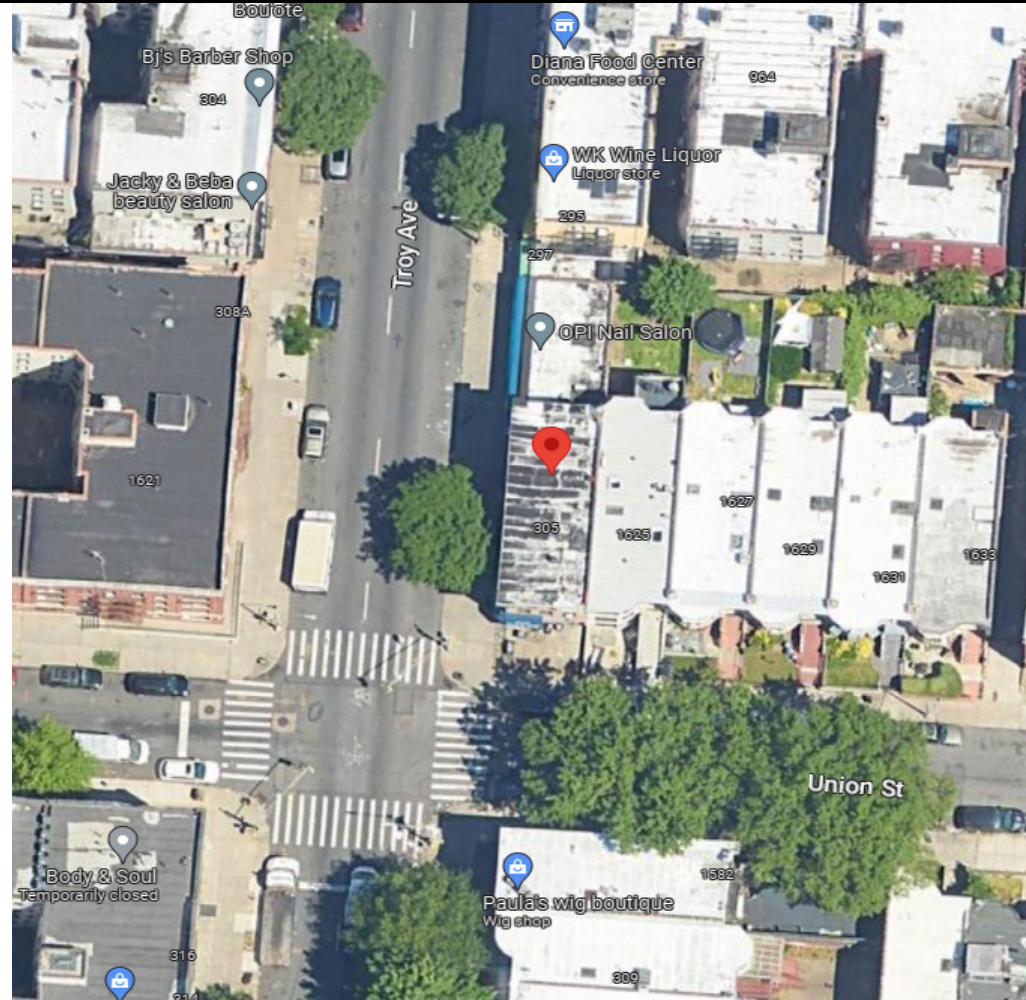
4 5 2 3 A C

POSSESSION

Immediate

COMMENTS

- Prime Crown Heights Corner Retail
- Wraparound Frontage with Private Bathrooms / Gas Line for Food
- Close Proximity to Bus Lines / Utica, Eastern Parkway Subway Stations



I PRG

BRANDON EFAP

BEfap@iprg.com

(917) 312-0291