

IPRG

**FOR
LEASE**

180 PARK ROW
NEW YORK, NY 10013
CORNER OF WORTH STREET & PARK ROW



SIZE

860 SF / Mezz

ASK

\$7,500/Month

FRONTAGE

13'

CEILING HEIGHTS

10'

TRANSPORTATION

B D J Z N Q R W 4 5 6

POSSESSION

Immediate

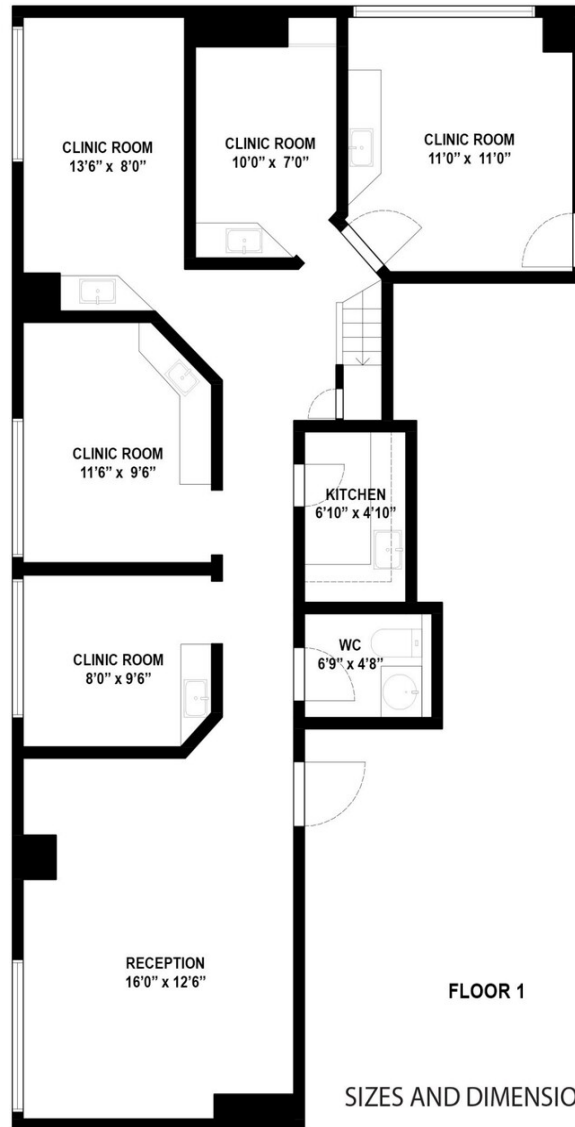
HIGHLIGHTS:

- Newly Renovated Space Near Subway / Bus Lines
- Prime Civic Center Medical with Great Foot, Driving Traffic
- Neighbors: Columbus Park, South Street Seaport, One Police Plaza, New York County Supreme Court, Chatham Square, Knickerbocker Village, Chase, Citibank, United Orient Bank





180 Park Row, Dental Office



860SF

FLOOR 1

SIZES AND DIMENSIONS ARE APPROXIMATE. ACTUAL MAY VARY

