

FOR SALE

36-38 William St

36-38 William Street, Newark, NJ 07102



Yanni Marmarou

Partner - Head of New Jersey Office

718.360.5059

ymarmarou@iprg.com

IPRG

iprg.com



Property Description

- Fully approved 31-unit development site
- 18 - Studios
- 12 - 1 Bedrooms
- 2,412 SF of Retail
- 3,616 SF lot size
- Architectural drawings, survey, environmental, and planning board approvals included.

Location Description

Prime downtown Newark development site. Located in "Teachers Village" two blocks from the Prudential Center and a half a mile from Newark Penn Station.

Frontage on William & Halsey St, which is a thriving retail corridor in Newark. Tremendous foot traffic from offices, NJIT, Rutgers, and local residents.

Yanni Marmarou

Partner - Head of New Jersey Office

718.360.5059

ymarmarou@iprg.com



Yanni Marmarou
Partner - Head of New Jersey Office
718.360.5059
ymarmarou@iprg.com

IPRG
iprg.com

02-18-002

36-38 WILLIAM STREET

36-38 WILLIAM STREET
NEWARK, NJ 07102

PERMIT SET

- ### GENERAL NOTES
1. ALL WORK SHALL BE IN ACCORDANCE WITH THE LATEST EDITIONS OF THE INTERNATIONAL BUILDING CODE (IBC) AND THE INTERNATIONAL PLUMBING AND MECHANICAL CODE (IMC).
 2. ALL WORK SHALL BE IN ACCORDANCE WITH THE LATEST EDITIONS OF THE INTERNATIONAL ELECTRICAL CODE (IEC) AND THE INTERNATIONAL FIRE CODE (IFC).
 3. ALL WORK SHALL BE IN ACCORDANCE WITH THE LATEST EDITIONS OF THE INTERNATIONAL MECHANICAL AND PLUMBING CODE (IMC) AND THE INTERNATIONAL PLUMBING AND MECHANICAL CODE (IPMC).
 4. ALL WORK SHALL BE IN ACCORDANCE WITH THE LATEST EDITIONS OF THE INTERNATIONAL MECHANICAL AND PLUMBING CODE (IMC) AND THE INTERNATIONAL PLUMBING AND MECHANICAL CODE (IPMC).
 5. ALL WORK SHALL BE IN ACCORDANCE WITH THE LATEST EDITIONS OF THE INTERNATIONAL MECHANICAL AND PLUMBING CODE (IMC) AND THE INTERNATIONAL PLUMBING AND MECHANICAL CODE (IPMC).
 6. ALL WORK SHALL BE IN ACCORDANCE WITH THE LATEST EDITIONS OF THE INTERNATIONAL MECHANICAL AND PLUMBING CODE (IMC) AND THE INTERNATIONAL PLUMBING AND MECHANICAL CODE (IPMC).
 7. ALL WORK SHALL BE IN ACCORDANCE WITH THE LATEST EDITIONS OF THE INTERNATIONAL MECHANICAL AND PLUMBING CODE (IMC) AND THE INTERNATIONAL PLUMBING AND MECHANICAL CODE (IPMC).
 8. ALL WORK SHALL BE IN ACCORDANCE WITH THE LATEST EDITIONS OF THE INTERNATIONAL MECHANICAL AND PLUMBING CODE (IMC) AND THE INTERNATIONAL PLUMBING AND MECHANICAL CODE (IPMC).
 9. ALL WORK SHALL BE IN ACCORDANCE WITH THE LATEST EDITIONS OF THE INTERNATIONAL MECHANICAL AND PLUMBING CODE (IMC) AND THE INTERNATIONAL PLUMBING AND MECHANICAL CODE (IPMC).
 10. ALL WORK SHALL BE IN ACCORDANCE WITH THE LATEST EDITIONS OF THE INTERNATIONAL MECHANICAL AND PLUMBING CODE (IMC) AND THE INTERNATIONAL PLUMBING AND MECHANICAL CODE (IPMC).
 11. ALL WORK SHALL BE IN ACCORDANCE WITH THE LATEST EDITIONS OF THE INTERNATIONAL MECHANICAL AND PLUMBING CODE (IMC) AND THE INTERNATIONAL PLUMBING AND MECHANICAL CODE (IPMC).
 12. ALL WORK SHALL BE IN ACCORDANCE WITH THE LATEST EDITIONS OF THE INTERNATIONAL MECHANICAL AND PLUMBING CODE (IMC) AND THE INTERNATIONAL PLUMBING AND MECHANICAL CODE (IPMC).
 13. ALL WORK SHALL BE IN ACCORDANCE WITH THE LATEST EDITIONS OF THE INTERNATIONAL MECHANICAL AND PLUMBING CODE (IMC) AND THE INTERNATIONAL PLUMBING AND MECHANICAL CODE (IPMC).
 14. ALL WORK SHALL BE IN ACCORDANCE WITH THE LATEST EDITIONS OF THE INTERNATIONAL MECHANICAL AND PLUMBING CODE (IMC) AND THE INTERNATIONAL PLUMBING AND MECHANICAL CODE (IPMC).
 15. ALL WORK SHALL BE IN ACCORDANCE WITH THE LATEST EDITIONS OF THE INTERNATIONAL MECHANICAL AND PLUMBING CODE (IMC) AND THE INTERNATIONAL PLUMBING AND MECHANICAL CODE (IPMC).
 16. ALL WORK SHALL BE IN ACCORDANCE WITH THE LATEST EDITIONS OF THE INTERNATIONAL MECHANICAL AND PLUMBING CODE (IMC) AND THE INTERNATIONAL PLUMBING AND MECHANICAL CODE (IPMC).
 17. ALL WORK SHALL BE IN ACCORDANCE WITH THE LATEST EDITIONS OF THE INTERNATIONAL MECHANICAL AND PLUMBING CODE (IMC) AND THE INTERNATIONAL PLUMBING AND MECHANICAL CODE (IPMC).
 18. ALL WORK SHALL BE IN ACCORDANCE WITH THE LATEST EDITIONS OF THE INTERNATIONAL MECHANICAL AND PLUMBING CODE (IMC) AND THE INTERNATIONAL PLUMBING AND MECHANICAL CODE (IPMC).
 19. ALL WORK SHALL BE IN ACCORDANCE WITH THE LATEST EDITIONS OF THE INTERNATIONAL MECHANICAL AND PLUMBING CODE (IMC) AND THE INTERNATIONAL PLUMBING AND MECHANICAL CODE (IPMC).
 20. ALL WORK SHALL BE IN ACCORDANCE WITH THE LATEST EDITIONS OF THE INTERNATIONAL MECHANICAL AND PLUMBING CODE (IMC) AND THE INTERNATIONAL PLUMBING AND MECHANICAL CODE (IPMC).
 21. ALL WORK SHALL BE IN ACCORDANCE WITH THE LATEST EDITIONS OF THE INTERNATIONAL MECHANICAL AND PLUMBING CODE (IMC) AND THE INTERNATIONAL PLUMBING AND MECHANICAL CODE (IPMC).
 22. ALL WORK SHALL BE IN ACCORDANCE WITH THE LATEST EDITIONS OF THE INTERNATIONAL MECHANICAL AND PLUMBING CODE (IMC) AND THE INTERNATIONAL PLUMBING AND MECHANICAL CODE (IPMC).
 23. ALL WORK SHALL BE IN ACCORDANCE WITH THE LATEST EDITIONS OF THE INTERNATIONAL MECHANICAL AND PLUMBING CODE (IMC) AND THE INTERNATIONAL PLUMBING AND MECHANICAL CODE (IPMC).
 24. ALL WORK SHALL BE IN ACCORDANCE WITH THE LATEST EDITIONS OF THE INTERNATIONAL MECHANICAL AND PLUMBING CODE (IMC) AND THE INTERNATIONAL PLUMBING AND MECHANICAL CODE (IPMC).
 25. ALL WORK SHALL BE IN ACCORDANCE WITH THE LATEST EDITIONS OF THE INTERNATIONAL MECHANICAL AND PLUMBING CODE (IMC) AND THE INTERNATIONAL PLUMBING AND MECHANICAL CODE (IPMC).
 26. ALL WORK SHALL BE IN ACCORDANCE WITH THE LATEST EDITIONS OF THE INTERNATIONAL MECHANICAL AND PLUMBING CODE (IMC) AND THE INTERNATIONAL PLUMBING AND MECHANICAL CODE (IPMC).
 27. ALL WORK SHALL BE IN ACCORDANCE WITH THE LATEST EDITIONS OF THE INTERNATIONAL MECHANICAL AND PLUMBING CODE (IMC) AND THE INTERNATIONAL PLUMBING AND MECHANICAL CODE (IPMC).
 28. ALL WORK SHALL BE IN ACCORDANCE WITH THE LATEST EDITIONS OF THE INTERNATIONAL MECHANICAL AND PLUMBING CODE (IMC) AND THE INTERNATIONAL PLUMBING AND MECHANICAL CODE (IPMC).
 29. ALL WORK SHALL BE IN ACCORDANCE WITH THE LATEST EDITIONS OF THE INTERNATIONAL MECHANICAL AND PLUMBING CODE (IMC) AND THE INTERNATIONAL PLUMBING AND MECHANICAL CODE (IPMC).
 30. ALL WORK SHALL BE IN ACCORDANCE WITH THE LATEST EDITIONS OF THE INTERNATIONAL MECHANICAL AND PLUMBING CODE (IMC) AND THE INTERNATIONAL PLUMBING AND MECHANICAL CODE (IPMC).



JKRP ARCHITECTS, LLC
100 WEST PENN SQUARE
SUITE 1000
PHILADELPHIA, PA 19107
215.928.9337
JOSEY POLLOCK, AIA
JKRPA@JKRPARCHITECTS.COM
215.928.9333
BLAKE KEEFMAN, AIA
BKK@JKRPARCHITECTS.COM
215.928.9331

OWNER / CLIENT



WALTER WILLIAMS MATTHEWS, LLC
C/O URBAN BUILDINGS DEVELOPMENT, LLC
234 101 SOUTH 11TH STREET
NEW YORK, NY 10003
212.991.0400
MATTHEWS GROUP
212.991.0400
MORRIS@LETTERE.COM
ALICIA@LETTERE.COM
201.757.7923
ALICIA@LETTERE.COM

CIVIL ENGINEER
R2 PROJECT MANAGEMENT, LLC
27 HERRING AVENUE
ROCKAWAY, NJ 07866
973.299.8200
JOHN PESSIANTO, P.E.
JP@R2PROJECTM.COM
973.299.8200

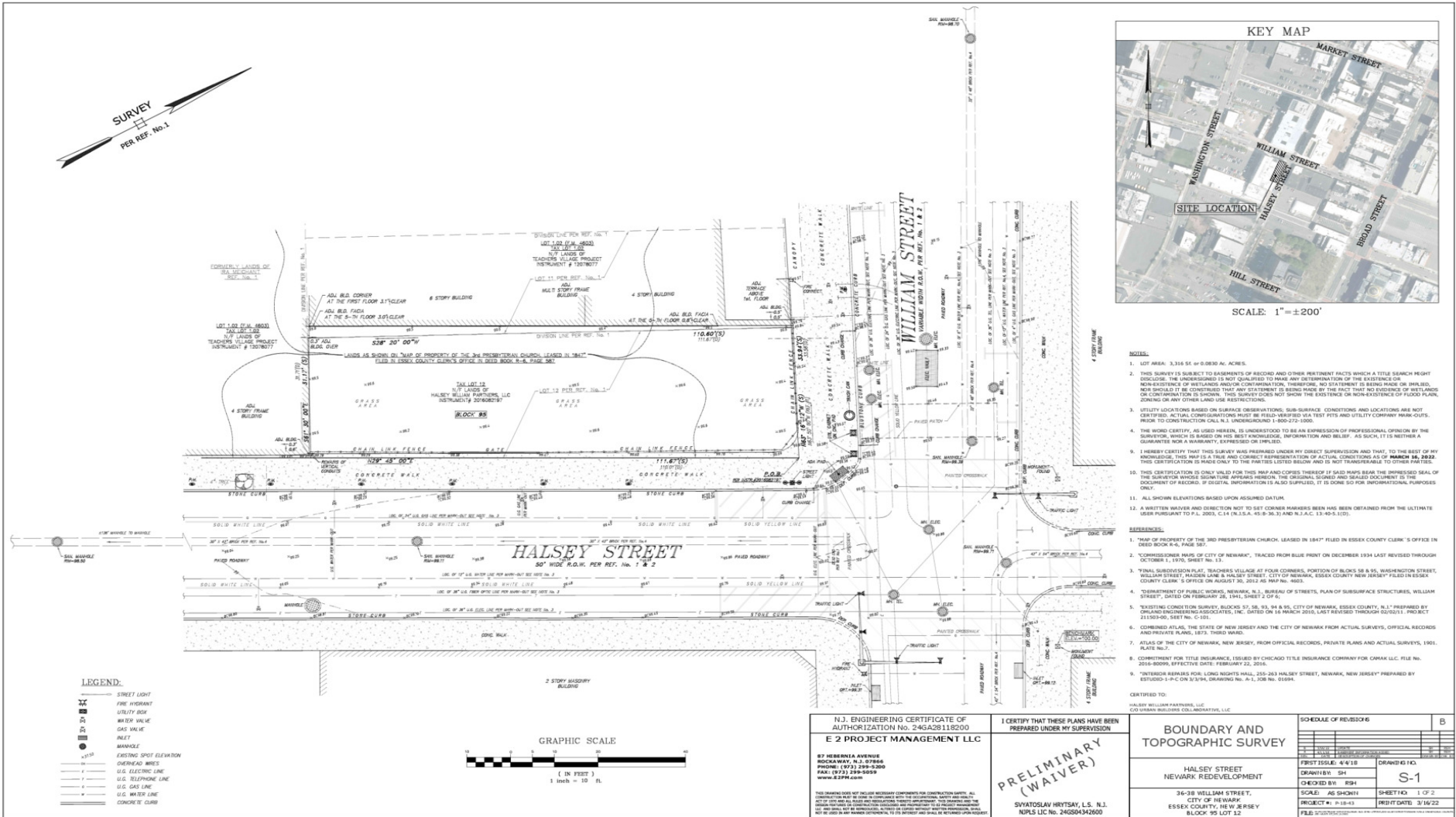
STRUCTURAL ENGINEER
R2 ENGINEERING, P.C.
201.951.4171
R2@R2ENGINEERING.COM
201.306.6173

MEP ENGINEER
ALDENSON ENGINEERING
401 LAWRENCE DRIVE
SOUTHAMPTON, NJ 08986
215.364.9333
DREW HOFACCOEN
215.364.9333
DREW@ALDENSONENGINEERING.COM

CS1.0

Yanni Marmarou
Partner - Head of New Jersey Office
718.360.5059
ymarmarou@iprg.com





Yanni Marmarou
Partner - Head of New Jersey Office
718.360.5059
ymarmarou@iprg.com

