

IPRG

528 EAST 11TH STREET, NEW YORK, NY 10009

EXCLUSIVE RETAIL LEASE

**RETAIL
FOR
LEASE**

Brandon Efron - Joey Sobolov
917-312-0291

IPRG
RETAIL LEASING

WWW.IPRG.COM
@IPRG_NY

**RETAIL
FOR
LEASE**

Brandon Efron - Joey Sobolov
917-312-0291

IPRG
RETAIL LEASING

WWW.IPRG.COM
@IPRG_NY



TABLE OF CONTENTS

03 EXECUTIVE SUMMARY

06 INTERIOR IMAGES

FOR MORE INFORMATION,
PLEASE CONTACT EXCLUSIVE AGENTS

Brandon Efap

Director of Retail Leasing
718.360.4761
befap@iprg.com

Joseph Sobolov

Retail Associate
718.416.6140
jsobolov@iprg.com

This information has been secured from sources we believe to be reliable, but we make no representations or warranties, expressed or implied, as to the accuracy of the information. References to square footage, age, zoning, lot size are approximate. Buyer must verify the information and bears all risk for any inaccuracies, including the regulatory status of apartments. Any projections, opinions, assumptions or estimates used herein are for example purposes only and do not represent the current or future performance of the property.

2 www.iprg.com

IPRG

EXECUTIVE SUMMARY





SPACE A

Asking \$3,500/Month

SPACE B

Asking \$4,500/Month

SPACE A + B

Asking \$7,750/Month

LEASE HIGHLIGHTS

400 SF
Space A Size

30'
Frontage

500 SF
Space B Size

9'
Ceiling Heights

***SPACES CAN BE EASILY COMBINED**

COMMENTS

- Newly Renovated Whitebox Spaces with HVAC
- Each Space Has a Bathroom in Place
- Prime East Village Location with Great Foot and Driving Traffic
- Neighbors: Stuyvesant Town, Mount Sinai Beth Israel, Union Square, Trader Joes, Target, Empanda Mama, Motorino Pizza, T-Mobile, Taverna East Village, Panda Express

UNION
SQUARE

N Q R W

WHOLE
FOODS
MARKET



L 4 5 6 6

TRADER JOE'S

amc
THEATRES

empanada
mama

Mount
Sinai
Beth Israel

stuytown

N Q R W

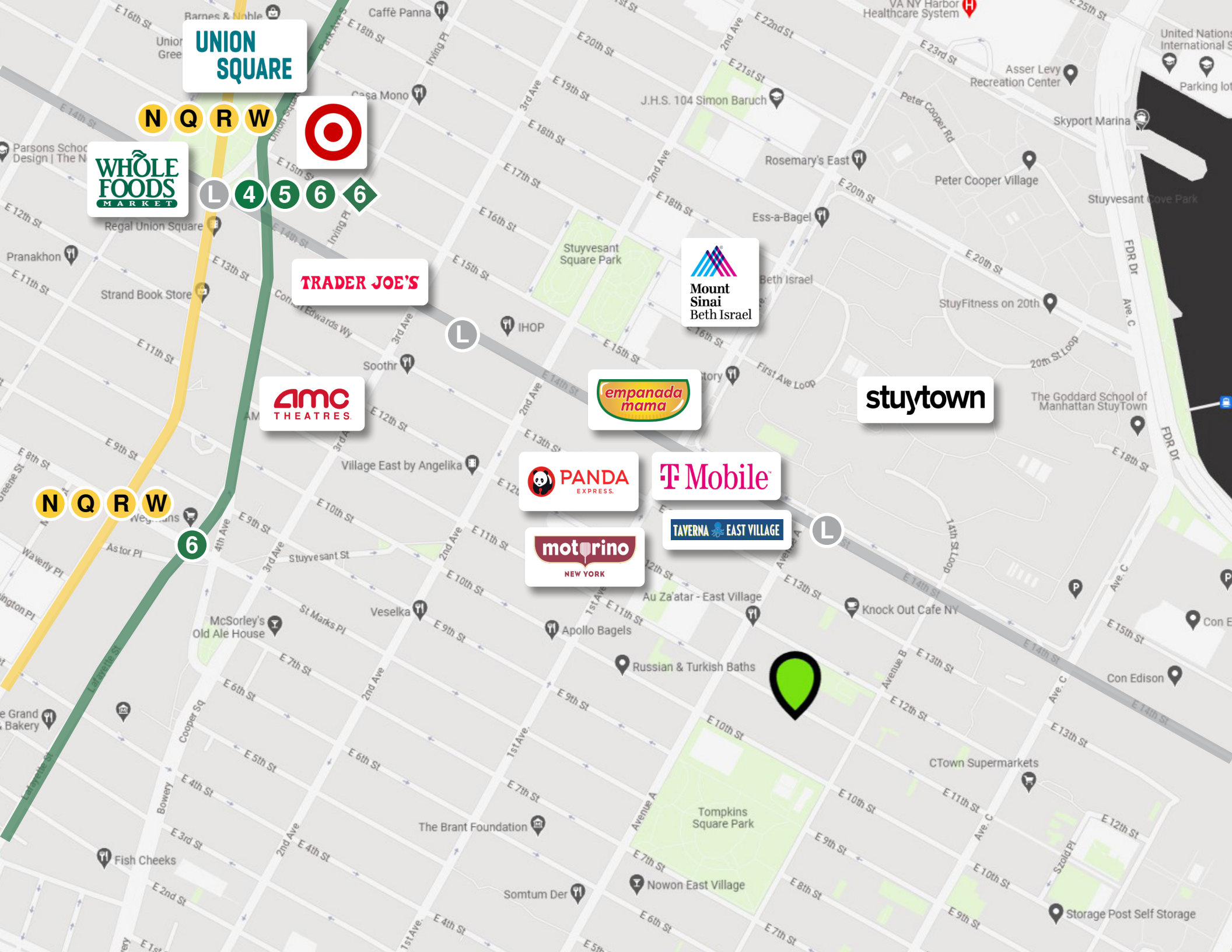
6

PANDA
EXPRESS

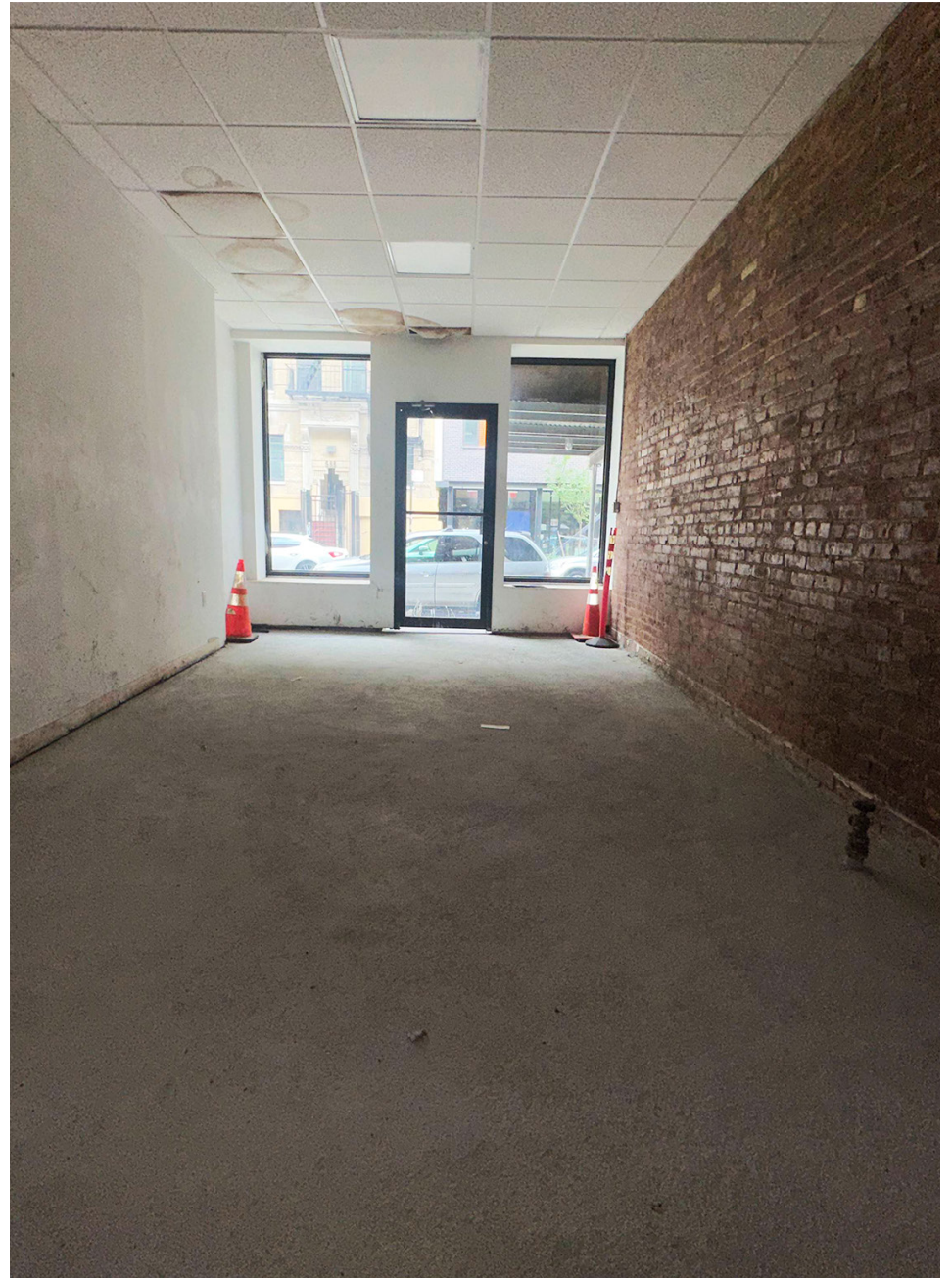
T-Mobile

motorino
NEW YORK

TAVERNA EAST VILLAGE



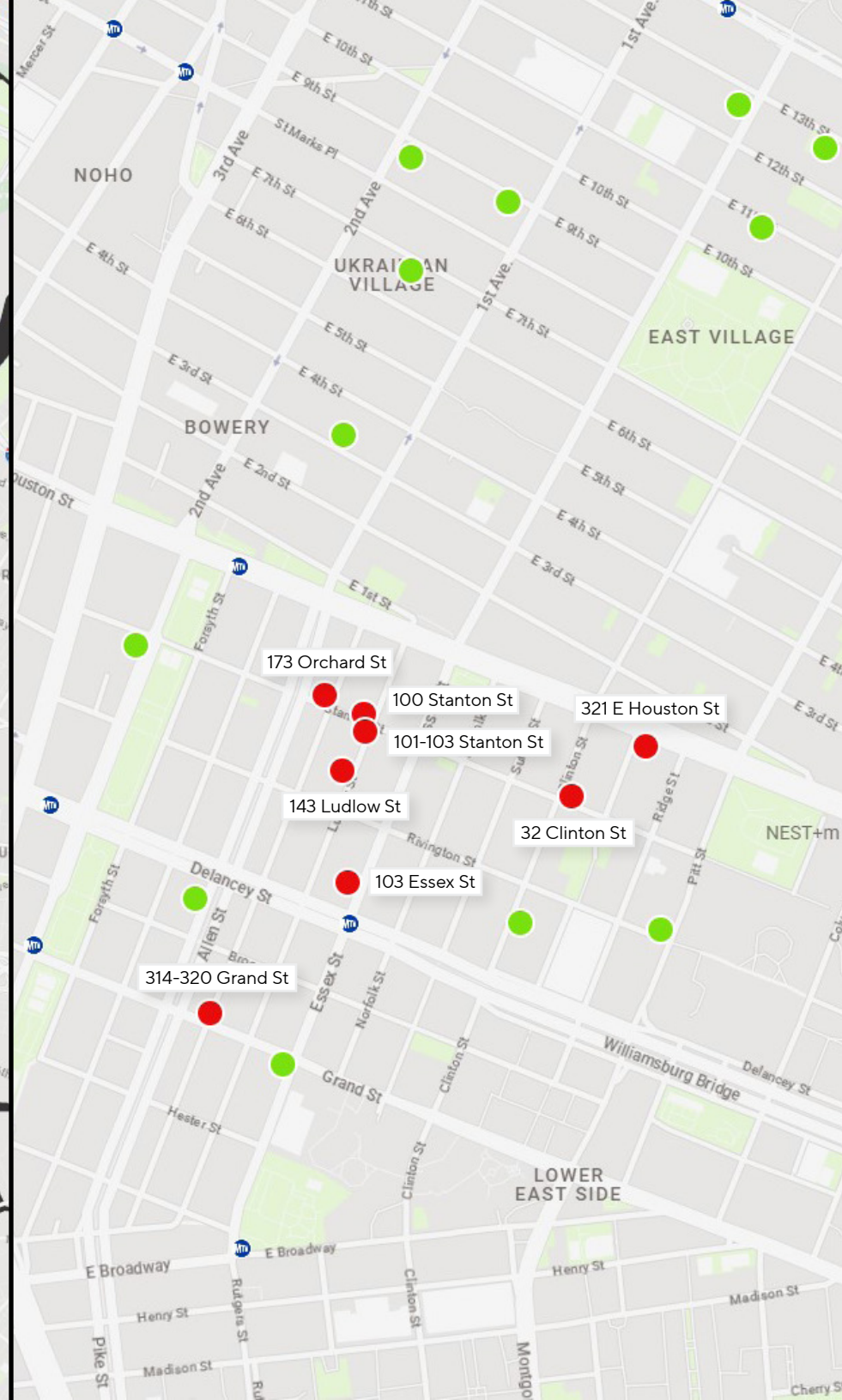
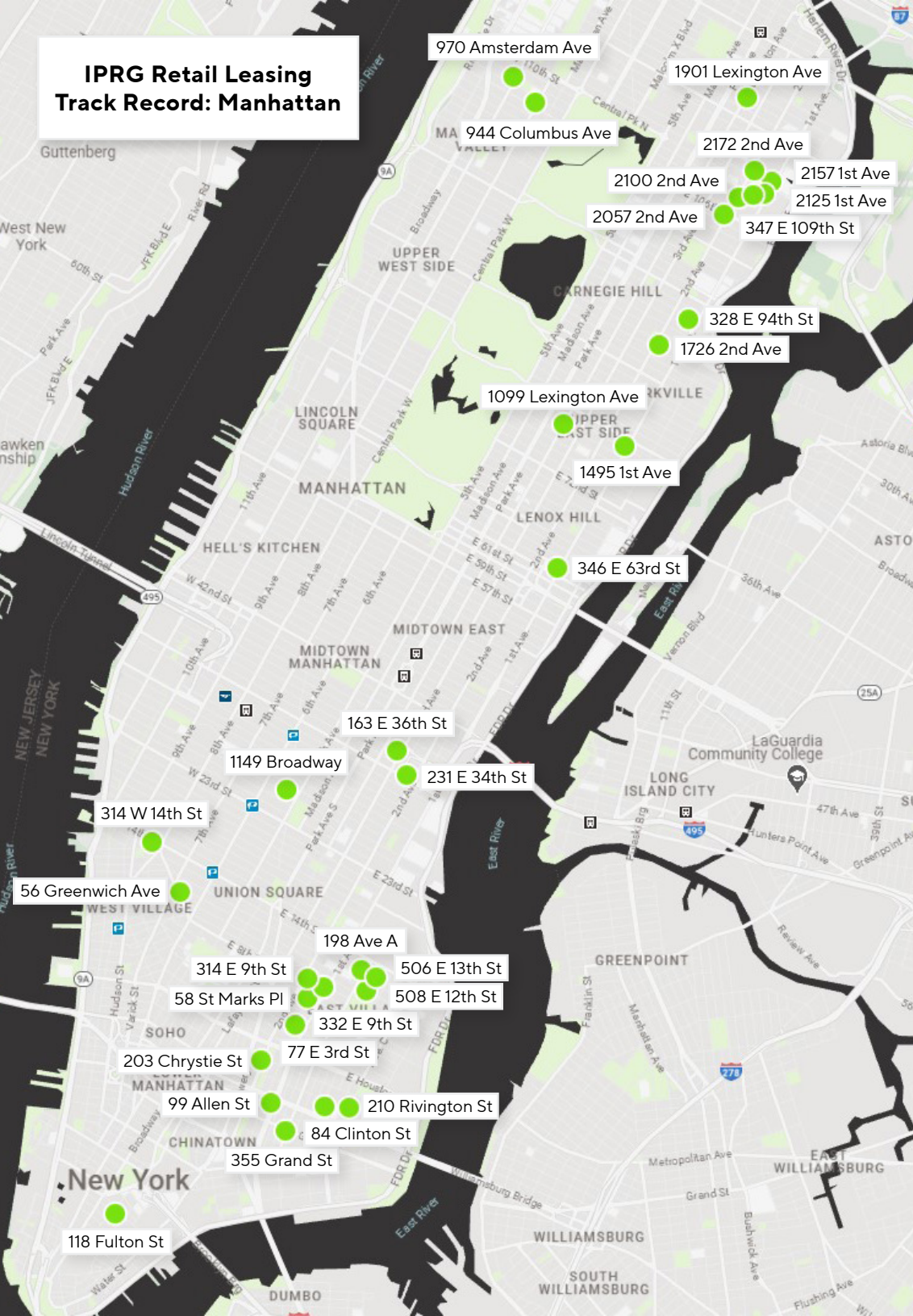
SPACE A INTERIOR PHOTOS



SPACE B INTERIOR PHOTOS



IPRG Retail Leasing Track Record: Manhattan





IPRG

528 EAST 11TH STREET
NEW YORK, NY 10009

**BRANDON
EFAP**

718.360.4761

befap@iprg.com

**JOSEPH
SOBOLOV**

718.416.6140

jsobolov@iprg.com
