

1418 DORIS STREET, BRONX, NY 10462

EXCLUSIVE OFFERING MEMORANDUM

75 Foot Frontage Development Site For Sale



IPRG

1418 DORIS STREET, BRONX, NY 10462



75 FOOT FRONTAGE DEVELOPMENT SITE FOR SALE

1418 DORIS STREET, BRONX, NY 10462

75 FOOT FRONTAGE DEVELOPMENT SITE FOR SALE

TABLE OF CONTENTS

01 INVESTMENT PRICING

02 PROPERTY INFORMATION

FOR MORE INFORMATION,
PLEASE CONTACT EXCLUSIVE AGENTS

Jared Friedman

Senior Director

718.550.0087

jfriedman@iprg.com

David Roman

Associate

718.360.9609

droman@iprg.com

Daniel Morrison

Associate

718.360.0668

dmorrison@iprg.com

This information has been secured from sources we believe to be reliable, but we make no representations or warranties, expressed or implied, as to the accuracy of the information. References to square footage, age, zoning, lot size are approximate. Buyer must verify the information and bears all risk for any inaccuracies, including the regulatory status of apartments. Any projections, opinions, assumptions or estimates used herein are for example purposes only and do not represent the current or future performance of the property.

© www.iprg.com

IPRG

INVESTMENT PRICING

1418 DORIS STREET





OFFERING PRICE

\$1,400,000

INVESTMENT HIGHLIGHTS

10,688
Approx. Buildable SF

75 ft x 95 ft
Lot Dimensions

R5A
Zoning

DELIVERED VACANT

\$131
\$/BSF

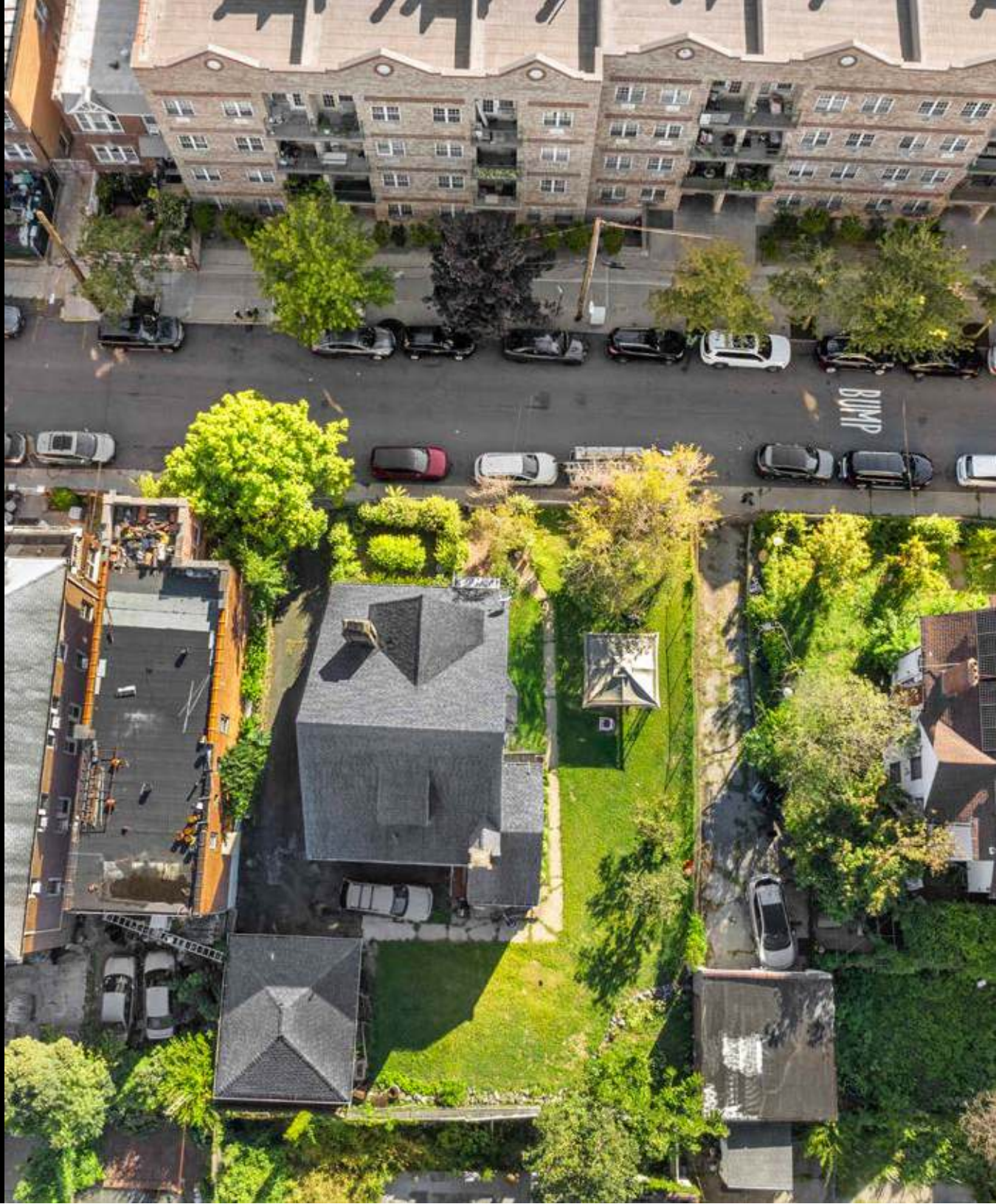
7,125
Lot Size

1.5
FAR

IPRG

PROPERTY INFORMATION

1418 DORIS STREET



The property is conveniently located within walking distance of both the Zerega Avenue and Castle Hill Avenue Subway Station, serving 6 trains.

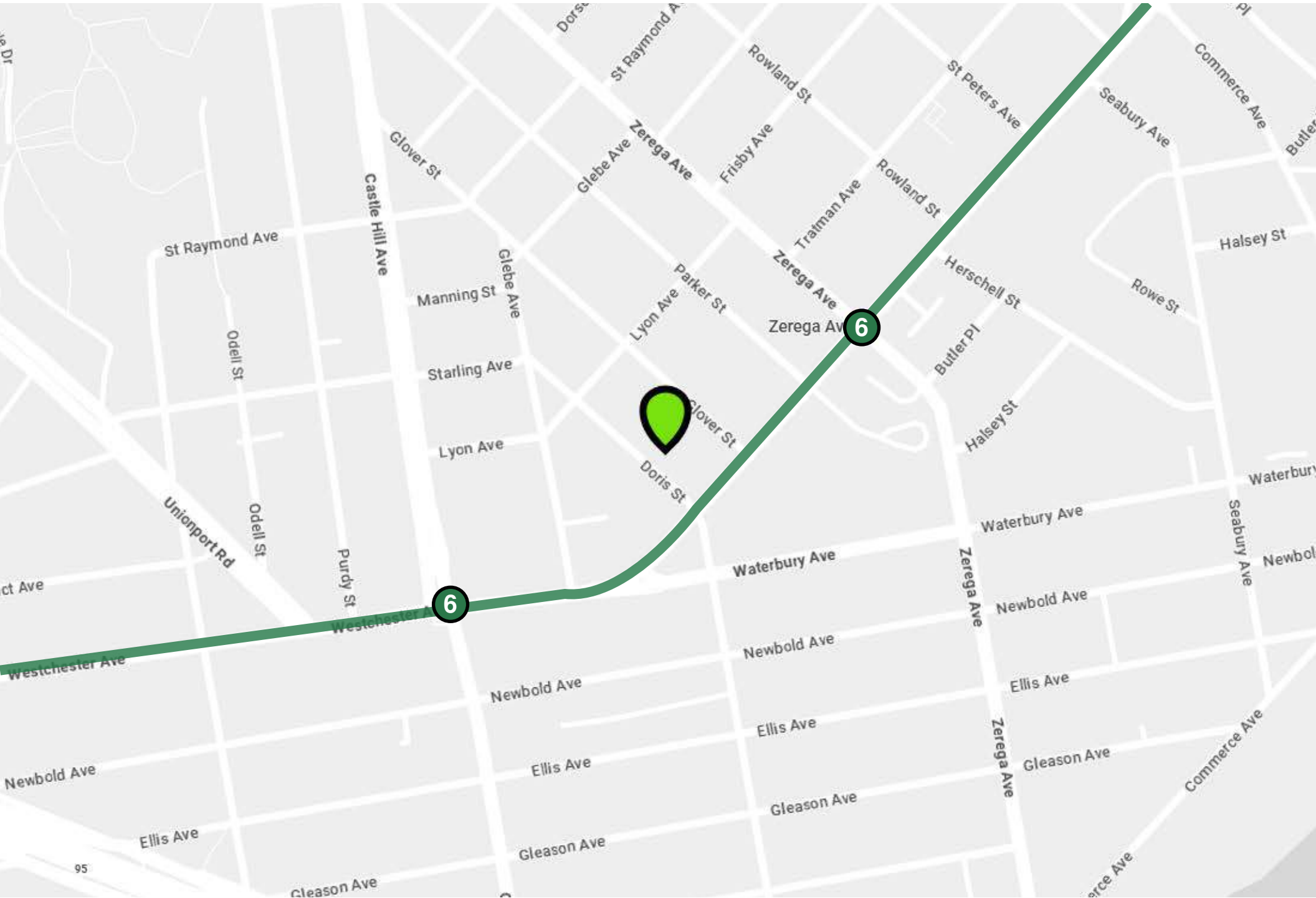
TAX MAP

[illegible]

1418 DORIS STREET, BRONX, NY 10462

75 FOOT FRONTAGE DEVELOPMENT SITE **FOR SALE**

PROPERTY MAP



1418 DORIS STREET, BRONX, NY 10462

75 FOOT FRONTAGE DEVELOPMENT SITE **FOR SALE**

ADDITIONAL PROPERTY PHOTOS





1418 DORIS STREET, BRONX, NY 10462

75 FOOT FRONTAGE DEVELOPMENT SITE FOR SALE

FOR MORE INFORMATION, PLEASE CONTACT EXCLUSIVE AGENTS

Jared Friedman

Senior Director

718.550.0087

jfriedman@iprg.com

David Roman

Associate

718.360.9609

droman@iprg.com

Daniel Morrison

Associate

718.360.0668

dmorrison@iprg.com

This information has been secured from sources we believe to be reliable, but we make no representations or warranties, expressed or implied, as to the accuracy of the information. References to square footage, age, zoning, lot size are approximate. Buyer must verify the information and bears all risk for any inaccuracies, including the regulatory status of apartments. Any projections, opinions, assumptions or estimates used herein are for example purposes only and do not represent the current or future performance of the property.