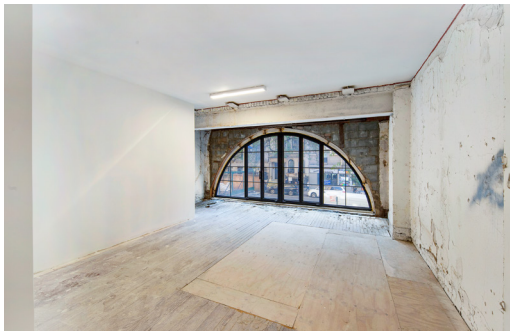




55 WEST 86TH STREET UPPER WEST SIDE, NYC

Between Central Park West and Columbus Avenue



APPROXIMATE SIZE

Ground Floor: 1,643 SF
Lower Level: 1,200 SF
Second Floor: 1,200 SF

ASKING PRICE

Upon Request

OCCUPANCY

Immediate

TERM

Negotiable

FRONTAGE

20 FT

COMMENTS:

- Unique Retail Space steps away from Central Park
- Brand new facade and storefront
- Ability to combine ground and second floor
- Black Iron in place
- All uses considered

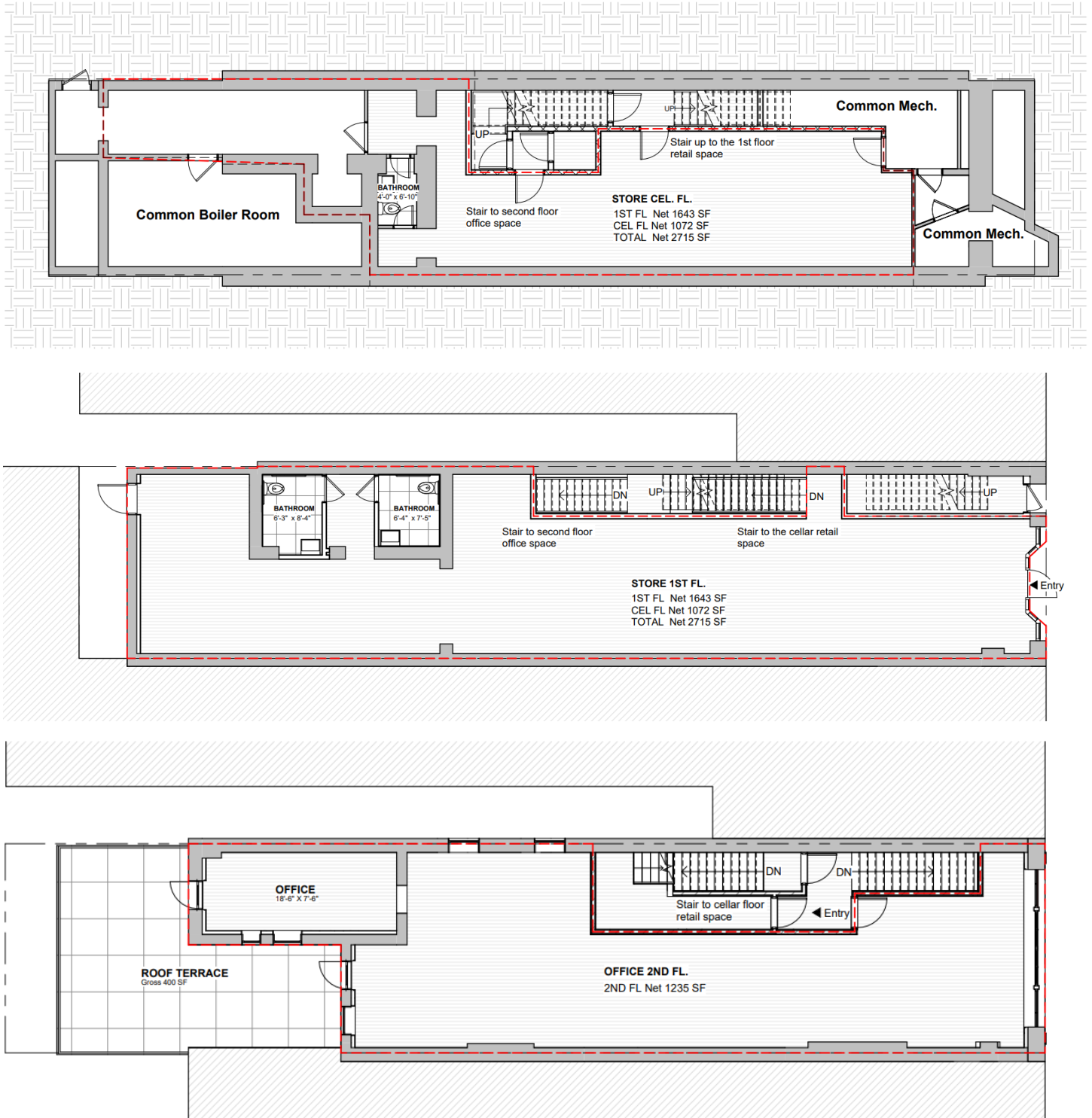
GROUND FLOOR PHOTOS



SECOND FLOOR PHOTOS



FLOOR PLANS



NEIGHBORS



45 Broadway
29th Floor
New York, NY 10006
718.360.8801

IPRG
RETAIL LEASING