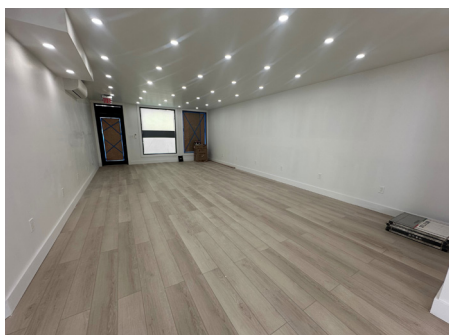
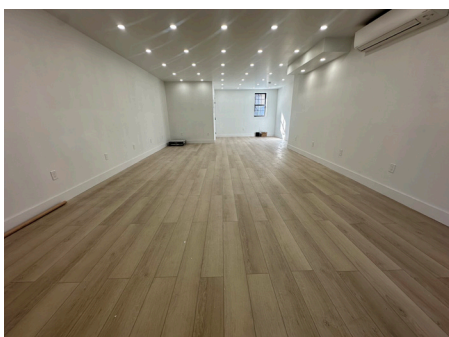




200 MESEROLE STREET WILLIAMSBURG, BROOKLYN

Between Humboldt Street and Bushwick Avenue



APPROXIMATE SIZE
900 SF w/ Basement

ASKING PRICE
Upon Request

OCCUPANCY
Immediate

TERM
Negotiable

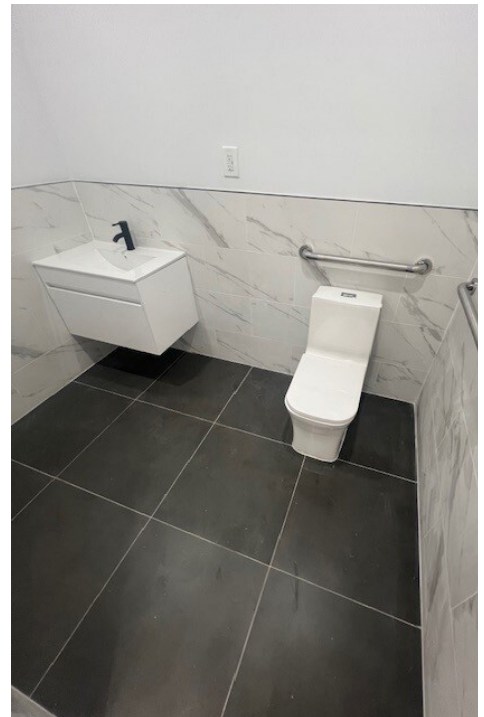
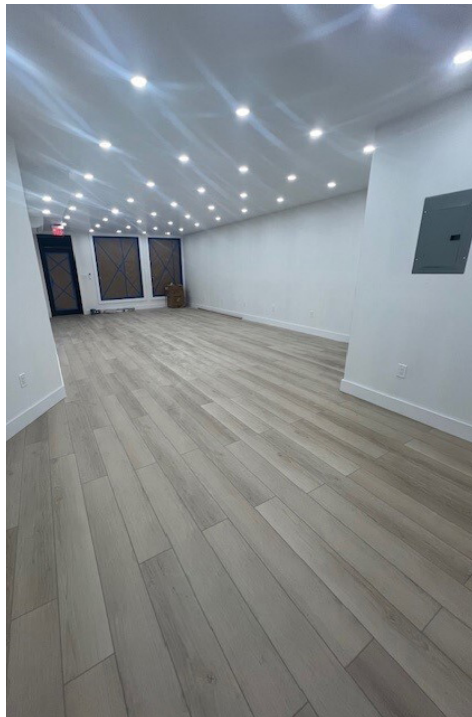
FRONTAGE
18 ft

TRANSPORTATION
L G M J Z B60

COMMENTS:

- Prime Williamsburg Location very close to Montrose Ave L train station
- Beautiful, newly renovated vanilla box with glass frontage / natural light
- Private ADA Bathroom, New Split Units, Open Floorplate
- Plug & Play Suitable for Several Types of Users

INTERIOR PHOTOS



200 MESEROLE STREET WILLIAMSBURG, BROOKLYN

RETAIL SPACE FOR LEASE

NEIGHBORS



45 Broadway
29th Floor
New York, NY 10006
718.360.8801

IPRG
RETAIL LEASING

BEN BIBERAJ
President of Retail Leasing
703.434.1461
bbiberaj@iprg.com

BRANDON EFAP
Senior Director
718.360.4761
befap@iprg.com

This information has been secured from sources we believe to be reliable, but we make no representations or warranties, expressed or implied, as to the accuracy of the information. References to square footage, age, zoning, lot size are approximate. Buyer must verify the information and bears all risk for any inaccuracies, including the regulatory status of apartments. Any projections, opinions, assumptions or estimates used herein are for example purposes only and do not represent the current or future performance of the property.