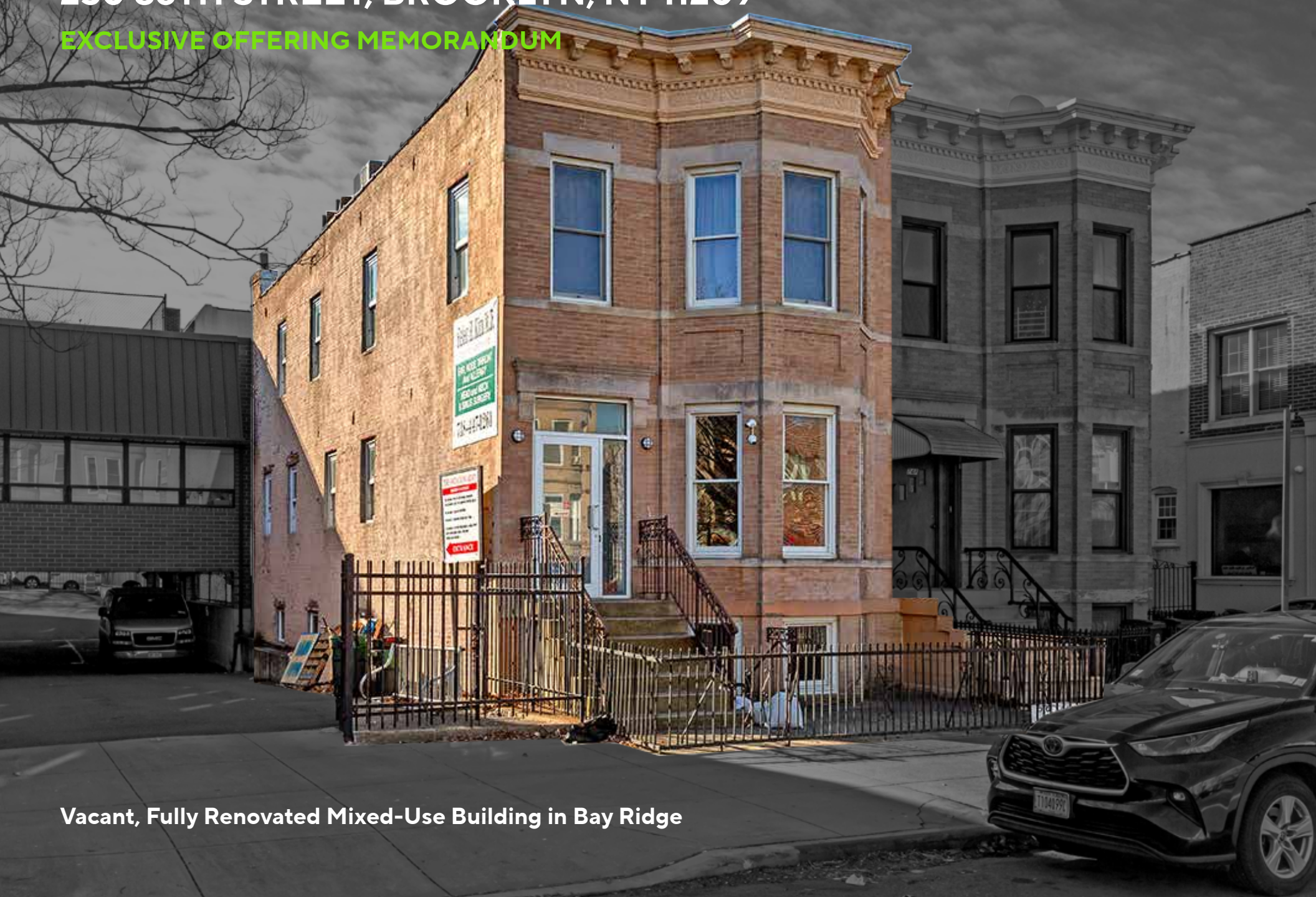


**250 86TH STREET, BROOKLYN, NY 11209**

**EXCLUSIVE OFFERING MEMORANDUM**



**Vacant, Fully Renovated Mixed-Use Building in Bay Ridge**

**IPRG**

250 86TH STREET, BROOKLYN, NY 11209

**IPRG**

RENOVATED MIXED-USE BUILDING FOR SALE

250 86TH STREET, BROOKLYN, NY 11209

VACANT, FULLY RENOVATED MIXED-USE BUILDING FOR SALE

## TABLE OF CONTENTS

**01 INVESTMENT PRICING**

**02 PROPERTY INFORMATION**

FOR MORE INFORMATION,  
PLEASE CONTACT EXCLUSIVE AGENTS

**Derek Bestreich**

President

718.360.8802

derek@iprg.com

**Luke Sproviero**

Founding Partner

718.360.8803

luke@iprg.com

**Adam Lobel**

Founding Partner

718.360.8815

adam@iprg.com

**Toby Waring**

Partner

718.360.8837

twaring@iprg.com

**Matt Dittmeier**

Director of Sales

718.360.1331

matt@iprg.com

This information has been secured from sources we believe to be reliable, but we make no representations or warranties, expressed or implied, as to the accuracy of the information. References to square footage, age, zoning, lot size are approximate. Buyer must verify the information and bears all risk for any inaccuracies, including the regulatory status of apartments. Any projections, opinions, assumptions or estimates used herein are for example purposes only and do not represent the current or future performance of the property.

2 [www.iprg.com](http://www.iprg.com)



# IPRG

## INVESTMENT PRICING

250 86TH STREET







**OFFERING PRICE**  
**\$1,900,000**

## INVESTMENT HIGHLIGHTS

1 Apt & 1 Medical Office  
# of Units

3,420  
Approx. SF

250 86TH STREET, BROOKLYN, NY 11209

VACANT, FULLY RENOVATED MIXED-USE BUILDING **FOR SALE**

INCOME & EXPENSES

UNIT	TYPE	APPROX. SF	PROJECTED	PROJECTED RPSF	STATUS (FM/RS)		NOTES
1	Medical Office - Vacant	2,280	\$5,250	\$55.26	Retail / Office	Fully Renovated and Turnkey Medical Office - Vacant	
2	Vacant - 3BR / 2BA	1,140	\$3,550	\$37.37	FM	Fully Renovated - Vacant	
			MONTHLY:	\$8,800			
			ANNUALLY:	\$105,600			

	PROJECTED
GROSS OPERATING INCOME:	\$ 105,600
REAL ESTATE TAXES (1):	\$ (13,901)
FUEL:	\$ (3,850)
WATER AND SEWER:	\$ (2,700)
INSURANCE:	\$ (3,000)
COMMON AREA ELECTRIC:	\$ (615)
REPAIRS & MAINTENANCE:	\$ (1,000)
PAYROLL:	\$ (1,200)
TOTAL EXPENSES:	\$ (26,266)
NET OPERATING INCOME:	\$ 79,334

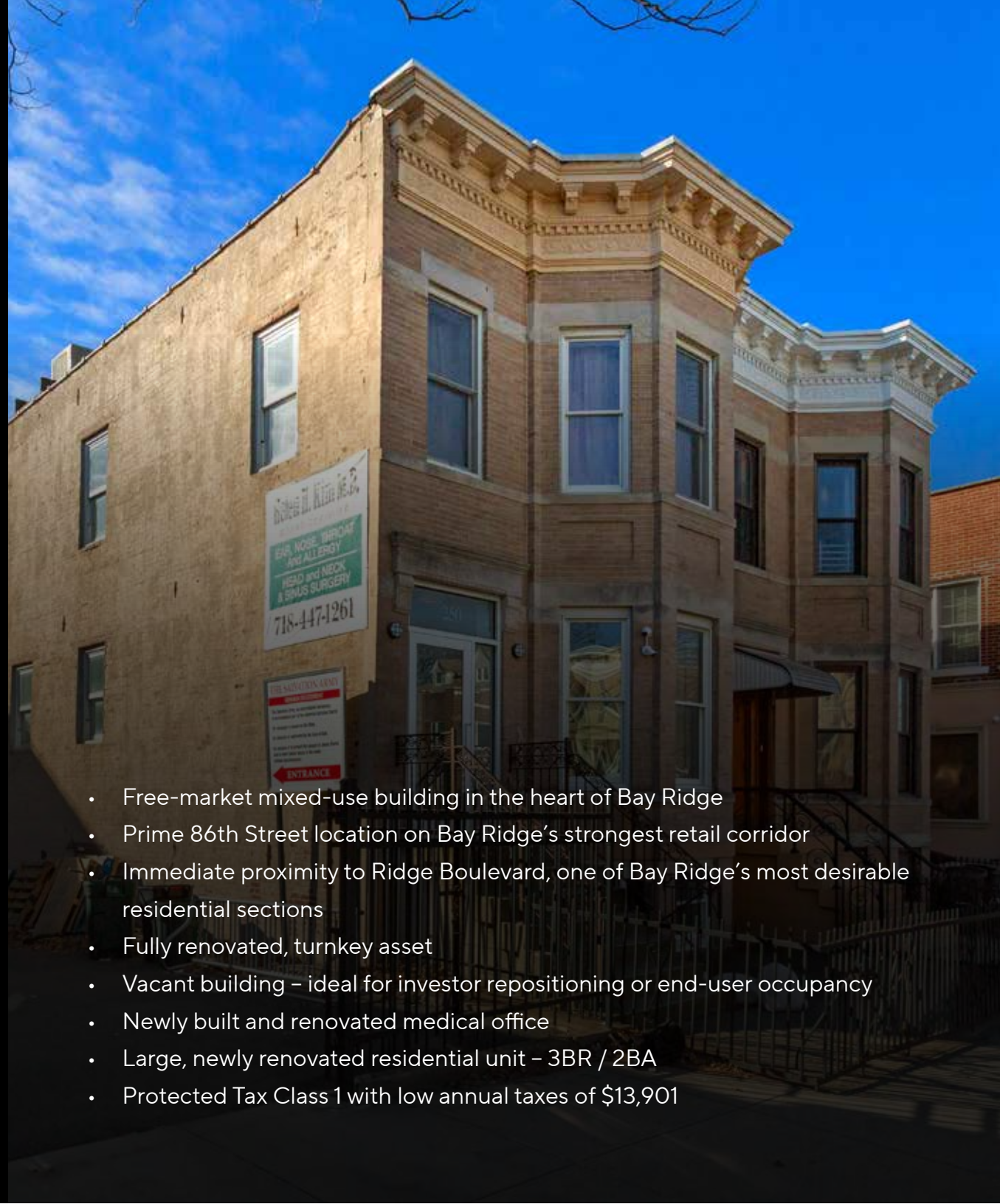
This information has been secured from sources we believe to be reliable, but we make no representations or warranties, expressed or implied, as to the accuracy of the information. References to square footage, age, zoning, lot size are approximate. Buyer must verify the information and bears all risk for any inaccuracies, including the regulatory status of apartments. Any projections, opinions, assumptions or estimates used herein are for example purposes only and do not represent the current or future performance of the property.



# IPRG

## PROPERTY INFORMATION

250 86TH STREET



- Free-market mixed-use building in the heart of Bay Ridge
- Prime 86th Street location on Bay Ridge's strongest retail corridor
- Immediate proximity to Ridge Boulevard, one of Bay Ridge's most desirable residential sections
- Fully renovated, turnkey asset
- Vacant building – ideal for investor repositioning or end-user occupancy
- Newly built and renovated medical office
- Large, newly renovated residential unit – 3BR / 2BA
- Protected Tax Class 1 with low annual taxes of \$13,901

# 250 86TH STREET, BROOKLYN, NY 11209

VACANT, FULLY RENOVATED MIXED-USE BUILDING **FOR SALE**

## INVESTMENT SUMMARY

Investment Property Realty Group (IPRG) is pleased to exclusively present the opportunity to acquire 250 86th Street, a prime free-market mixed-use asset located in the heart of Bay Ridge. The property is located on 86th Street just off Ridge Boulevard, at the intersection of Bay Ridge's strongest retail corridor and one of the neighborhood's most sought-after residential sections.

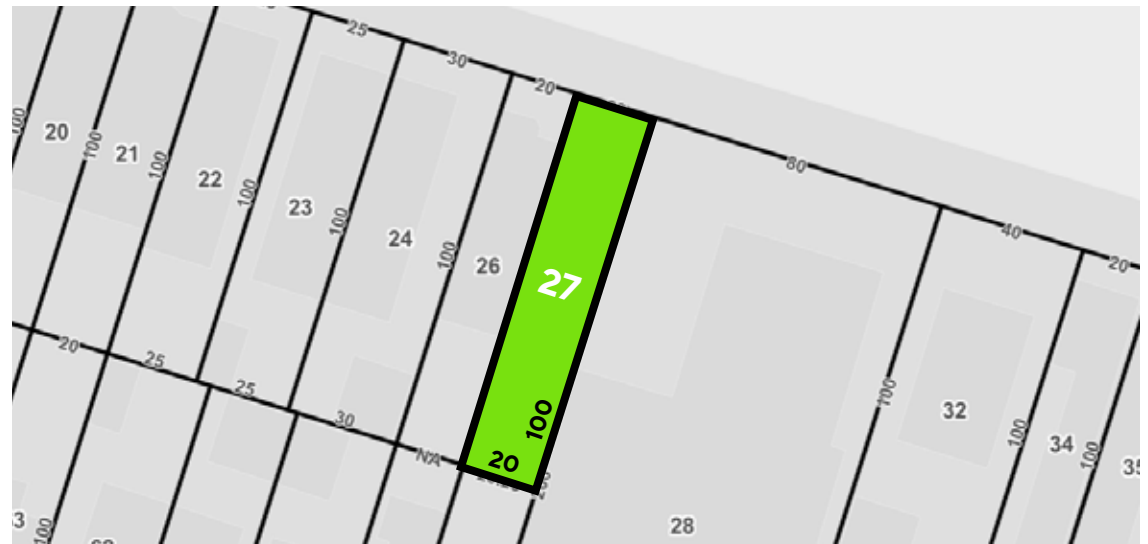
The subject property consists of one residential apartment above a two-story medical office, totaling approximately 3,420 square feet. The building is constructed irregularly, measuring approximately 20 feet by 58 feet on one side and 20 feet by 50 feet on the other, situated on a 20-foot by 100-foot lot. The property is zoned R5D / BR and benefits from the highly sought-after protected Tax Class 1 designation.

The asset is fully renovated and turnkey and is currently vacant, offering a unique opportunity for investors to reposition the asset or for an end user to occupy the space. The property features a newly built-out medical office and a large, brand-new 3-bedroom / 2-bathroom residential apartment. The property is located less than two blocks from the 86th Street [R] subway station, providing convenient access to Manhattan, Queens, and the rest of Brooklyn.

## BUILDING INFORMATION

BLOCK & LOT:	06043-0027
NEIGHBORHOOD:	Bay Ridge
CROSS STREETS:	Ridge Boulevard & 3rd Avenue
BUILDING DIMENSIONS:	Built Irregular approx 20 ft x 58 ft on one side / approx. 20 ft x 50 ft on other side
LOT DIMENSIONS:	20 ft x 100 ft
# OF UNITS:	1 Apartment & 1 Medical Office
APPROX. TOTAL SF:	3,420
ZONING:	R5D, BR
FAR:	2
TAX CLASS / ANNUAL TAXES:	1 / \$13,901

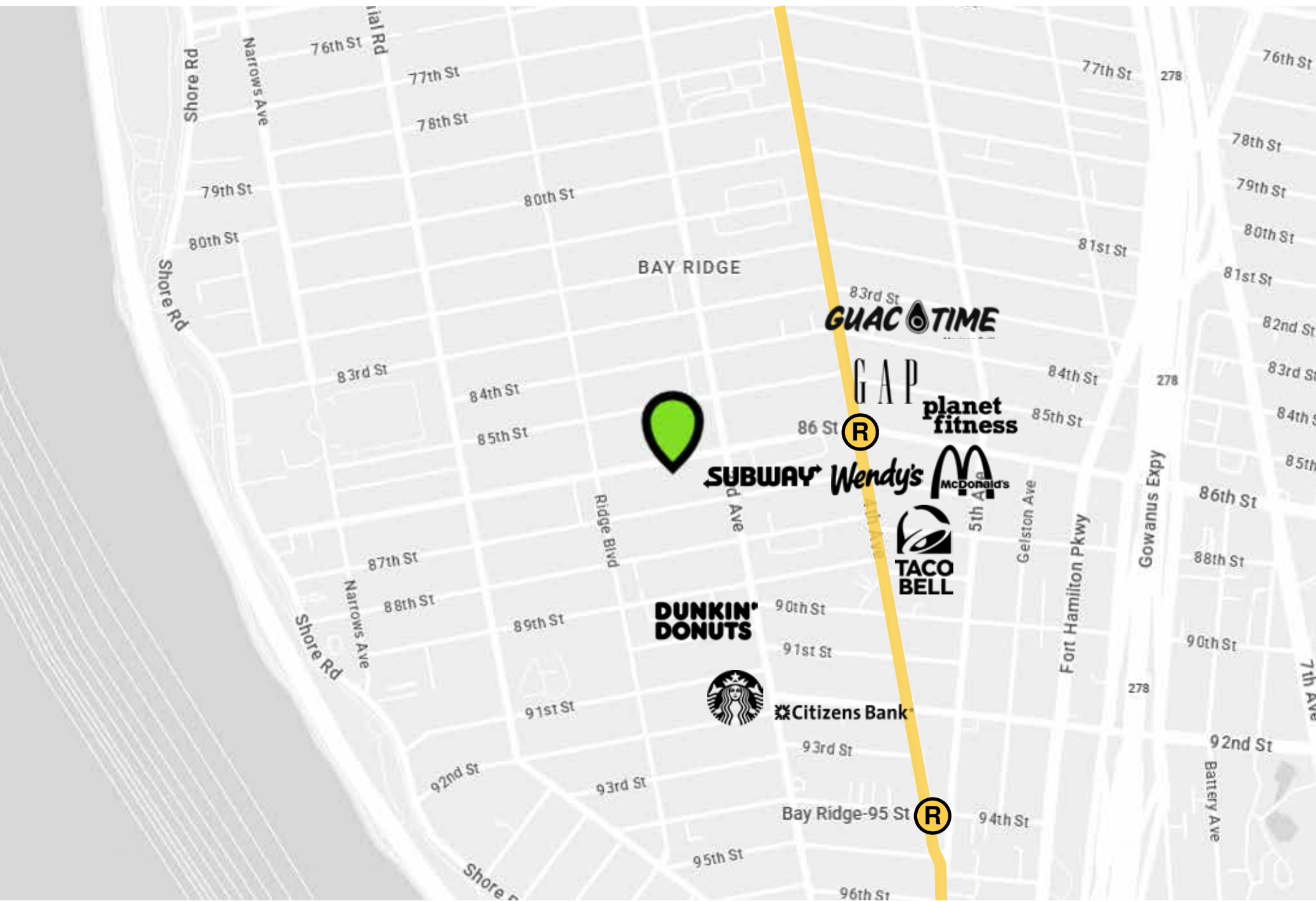
## TAX MAP



# 250 86TH STREET, BROOKLYN, NY 11209

VACANT, FULLY RENOVATED MIXED-USE BUILDING **FOR SALE**

PROPERTY MAP





# 250 86TH STREET, BROOKLYN, NY 11209

VACANT, FULLY RENOVATED MIXED-USE BUILDING **FOR SALE**

## ADDITIONAL PROPERTY PHOTOS



This information has been secured from sources we believe to be reliable, but we make no representations or warranties, expressed or implied, as to the accuracy of the information. References to square footage, age, zoning, lot size are approximate. Buyer must verify the information and bears all risk for any inaccuracies, including the regulatory status of apartments. Any projections, opinions, assumptions or estimates used herein are for example purposes only and do not represent the current or future performance of the property.



# IPRG

250 86TH STREET, BROOKLYN, NY 11209

VACANT, FULLY RENOVATED MIXED-USE BUILDING FOR SALE

## FOR MORE INFORMATION, PLEASE CONTACT EXCLUSIVE AGENTS

<b>Derek Bestreich</b>	<b>Luke Sproviero</b>	<b>Adam Lobel</b>	<b>Toby Waring</b>	<b>Matt Dittmeier</b>
President	Founding Partner	Founding Partner	Partner	Director of Sales
718.360.8802	718.360.8803	718.360.8815	718.360.8837	718.360.1331
derek@iprg.com	luke@iprg.com	adam@iprg.com	twaring@iprg.com	matt@iprg.com

This information has been secured from sources we believe to be reliable, but we make no representations or warranties, expressed or implied, as to the accuracy of the information. References to square footage, age, zoning, lot size are approximate. Buyer must verify the information and bears all risk for any inaccuracies, including the regulatory status of apartments. Any projections, opinions, assumptions or estimates used herein are for example purposes only and do not represent the current or future performance of the property.